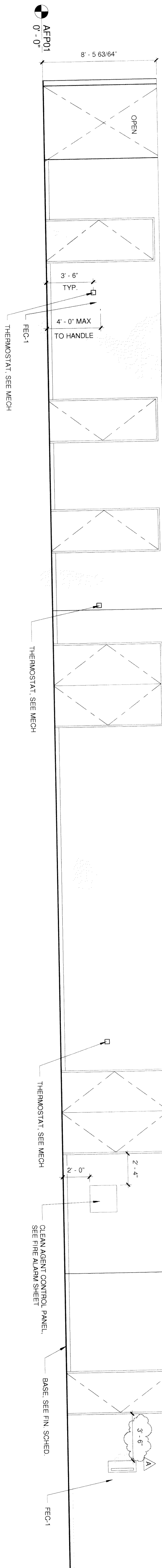


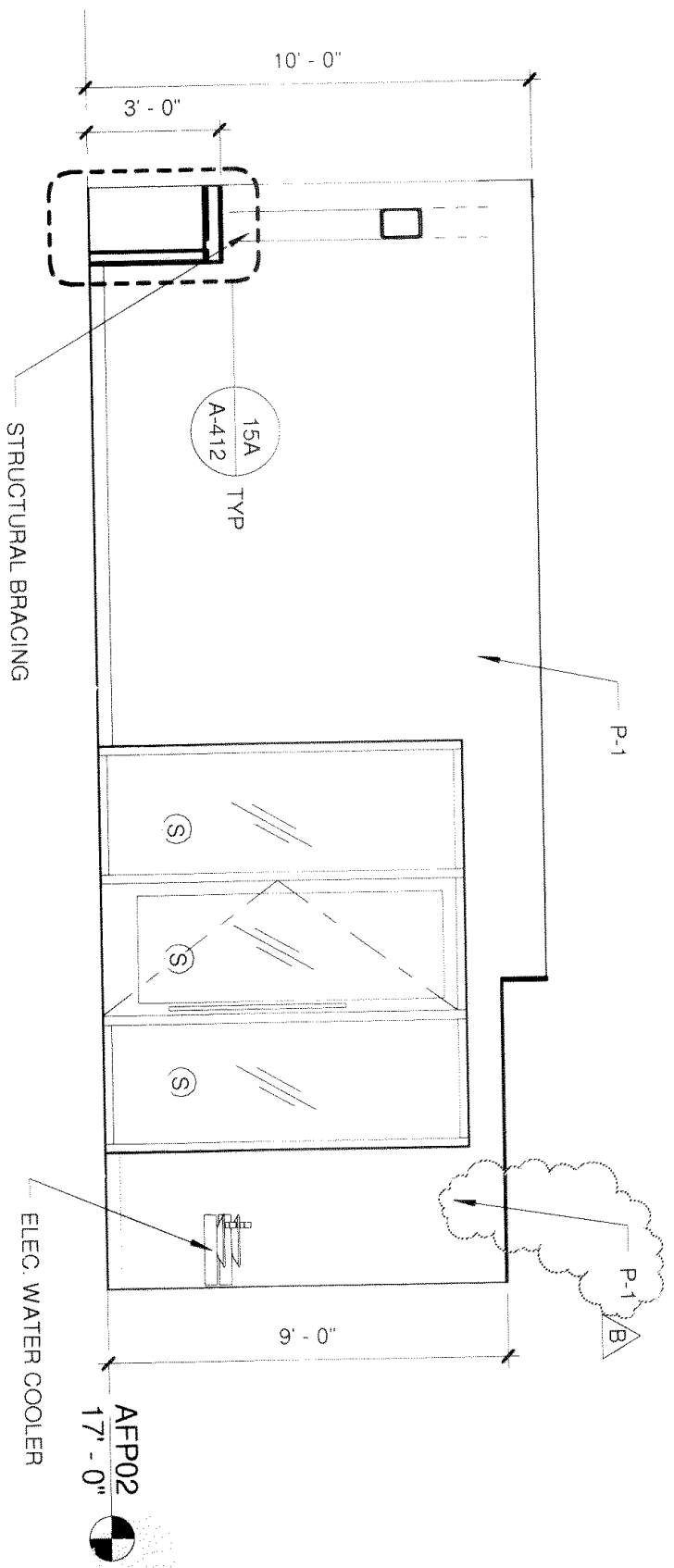
29 | HALLWAY 142

1/4" = 1'-0"



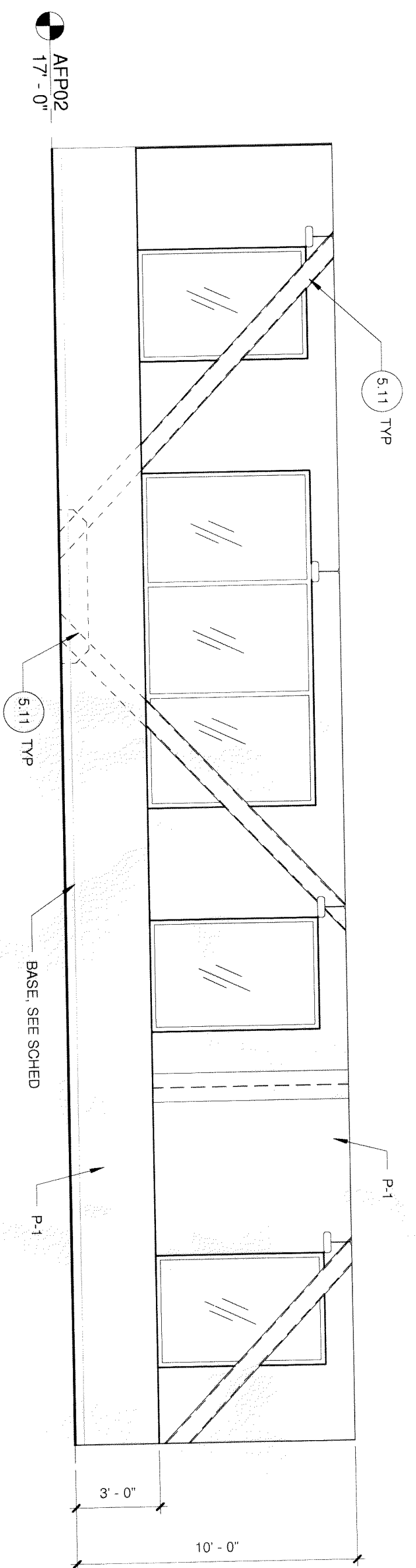
28 | HALLWAY 140

1/4" = 1'-0"



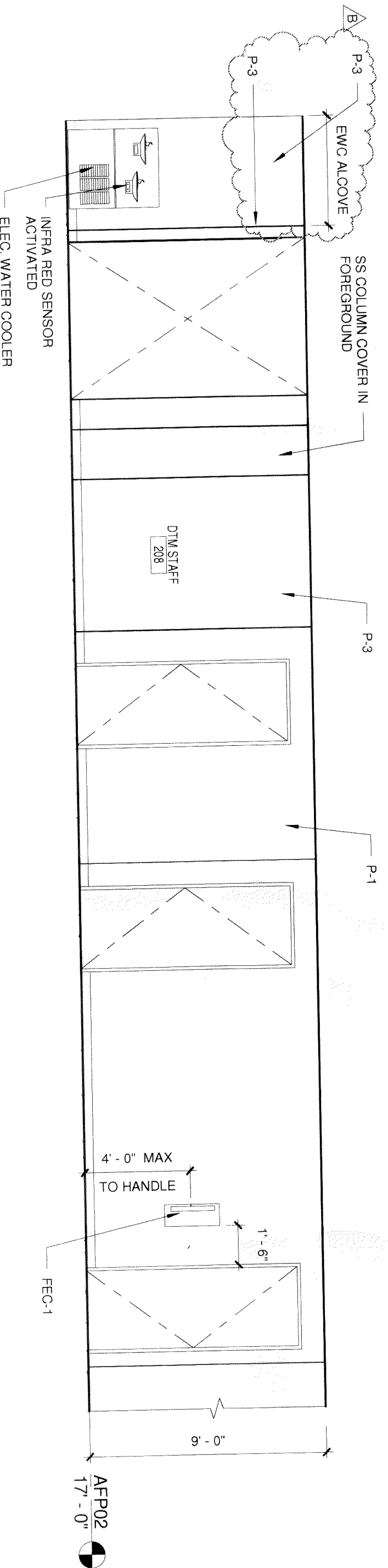
27 | DTM STAFF 208 - WEST WALL

1/4" = 1'-0"



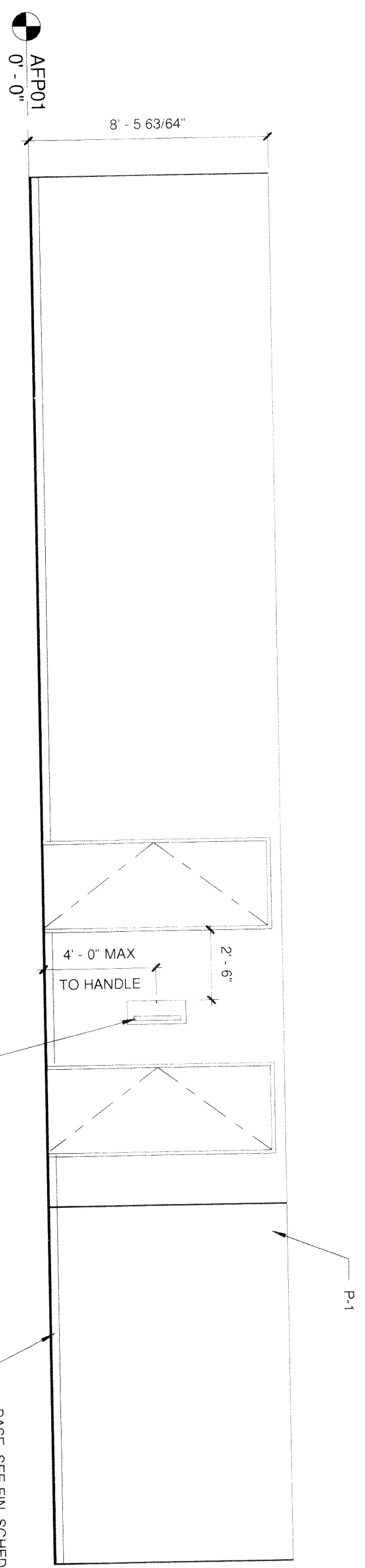
26 | HALLWAY 242- SOUTH WALL

1/4" = 1'-0"



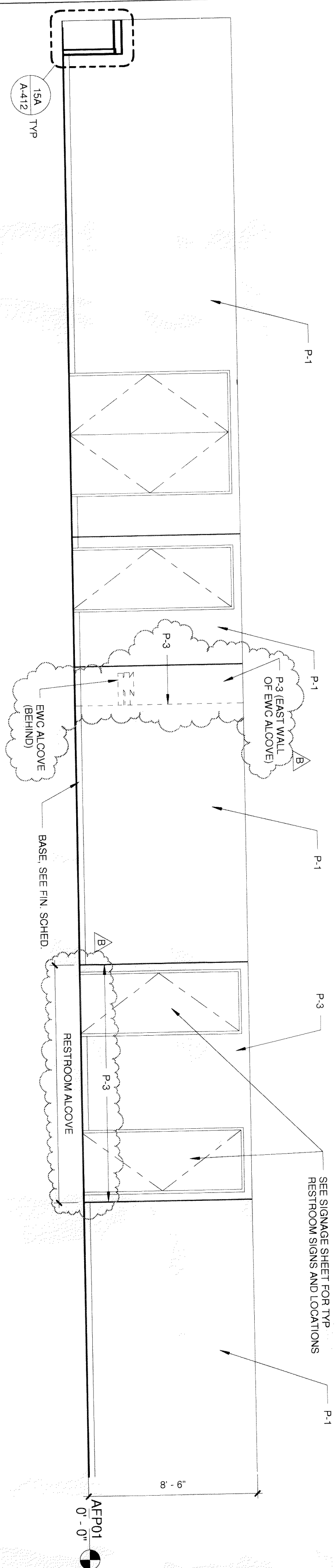
25 | HALLWAY 242- NORTH WALL PARTIAL

1/4" = 1'-0"



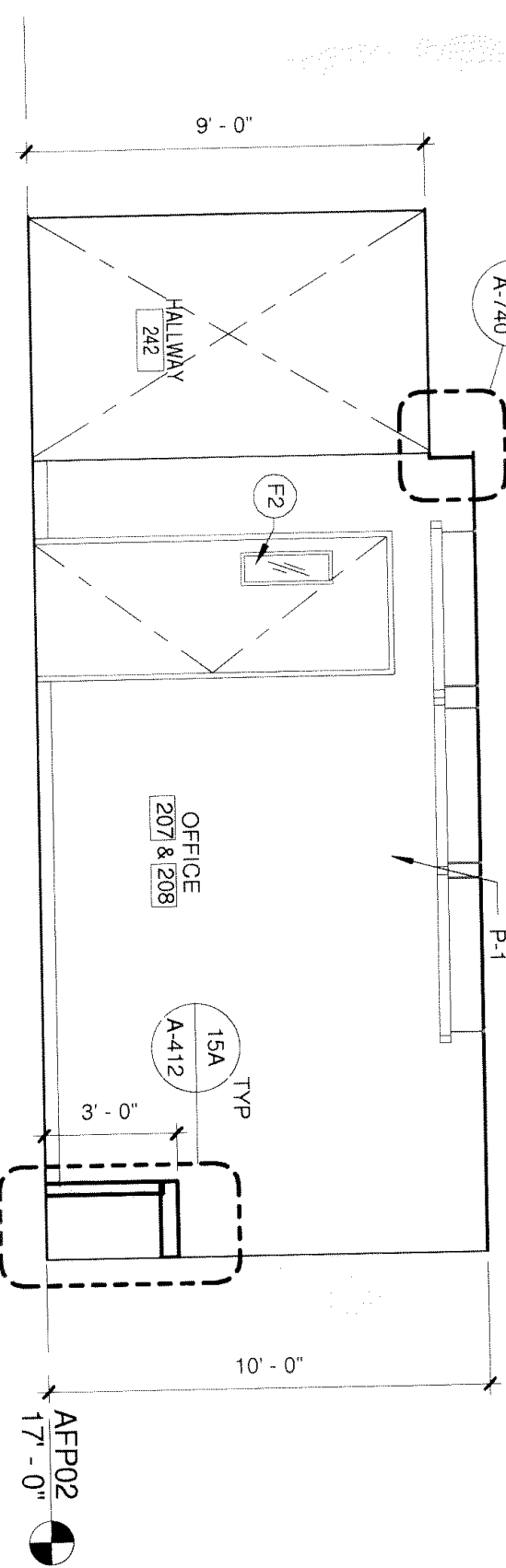
12 | HALLWAY 141- EAST WALL

1/4" = 1'-0"



11 | HALLWAY 141- WEST WALL

1/4" = 1'-0"



10 | HALLWAY 242- EAST WALL

1/4" = 1'-0"

- NOTE: SEE FINISH SCHEDULE FOR MATERIALS & TYP SEE FINISH PLAN AND SCHEDULE FOR INTERIOR SIGNAGE, TYP SEE DETAIL 1/A-709 FOR TYP FEC-1 DETAILS
- (F) FIRE RATED GLASS GL-5A
 - (F) FIRE RATED SAFETY GLASS GL-4
 - (F) FIRE RATED SAFETY GLASS GL-6
 - (S) SAFETY GLASS GL-5A
 - (SP) SPANDREL GLASS GL-2
 - (V) VISION GLASS GL-5

SCALE: 1/4" = 1'-0"

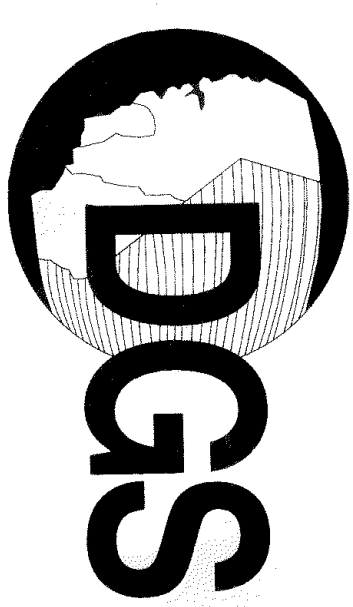


PROJECT



PROJECT ADDRESS:
1886 VICTORIA STREET
FON IMA, CA 95030

CLIENT



10701 15th AVENUE
DEPARTMENT OF GENERAL SERVICES
REAL ESTATE SERVICES DIVISION
707 THIRD STREET, SUITE 3-305
WEST SACRAMENTO, CA 95811
PROJECT MANAGER: JAMES W. HANNU
PROJECT TELEPHONE: (916) 305-1738

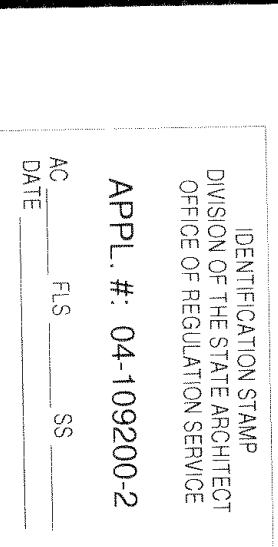
DESIGNER

DMJM H&N | AECOM

889 TOWN & COUNTRY ROAD, SUITE 200, CALIFORNIA 95666
TEL: (916) 240-0171 FAX: (916) 272-2229 www.dmjmhqn.com

CONSULTANT

DSA STAMP



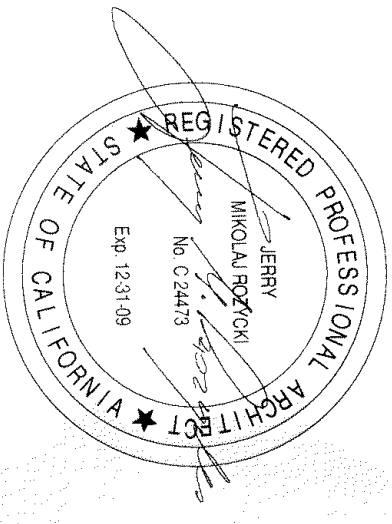
STATUS

JULY 30, 2008

ISSUE

NO.	DATE	DESCRIPTION
B	10/15/08	BID PERIOD ADDENDUM #6
A	9/26/08	BID PERIOD ADDENDUM #5
A	08/20/08	DESCRIPTION
PROJECT NO: 60004333.000		
DRAWN BY: GS		
CHECK BY: JR		

STAMP



SHEET TITLE

INTERIOR ELEVATIONS

A-622

© 2008 DMJM H&N, INC.